



# PHARMACY



FIXTURES, DISPLAYS AND SHELVING SOLUTIONS FOR  
PHARMACIES, LABORATORIES AND COSMETIC COUNTERS







## OUR COUNTERS AND LABORATORIES



Our counters and laboratory shelving can be configured in nearly countless ways. Our custom-made solutions will help you create a welcoming space for your clients, and a practical and user-friendly work area for your lab employees and pharmacists. Whether glass, melamine or a mix of both, your prescription spaces and cash and photo counters will look more inviting than ever.

# OUR RxLab SYSTEM

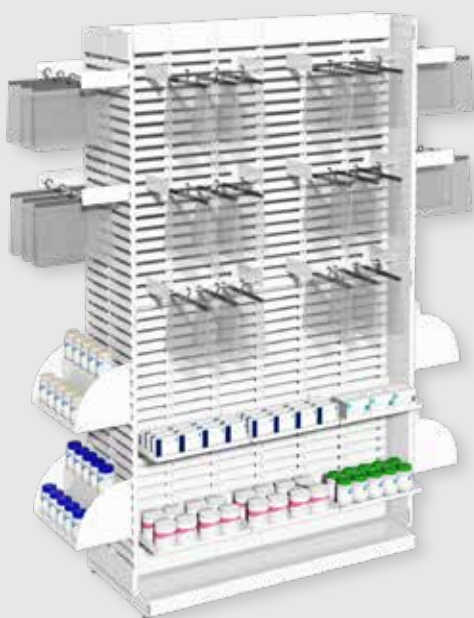
Our RxLab system is specifically designed for pharmacy laboratories. The RxLab maximizes your space for ergonomic and practical work areas.

## WALL WITH FIXED PANELS

### AVAILABLE DIMENSIONS (IN)

Length: 16 24 32 40 48

Height: 84



## ISLAND

The island design allows for a freestanding configuration of the RxLab.

### AVAILABLE DIMENSIONS (IN)

Length: 16 24 32 40 48

Height: 84



## WALL WITH SLIDING PANELS

The sliding panels allow you to double your storage space.

### AVAILABLE DIMENSIONS (IN)

96 120 144 168 192 216 240

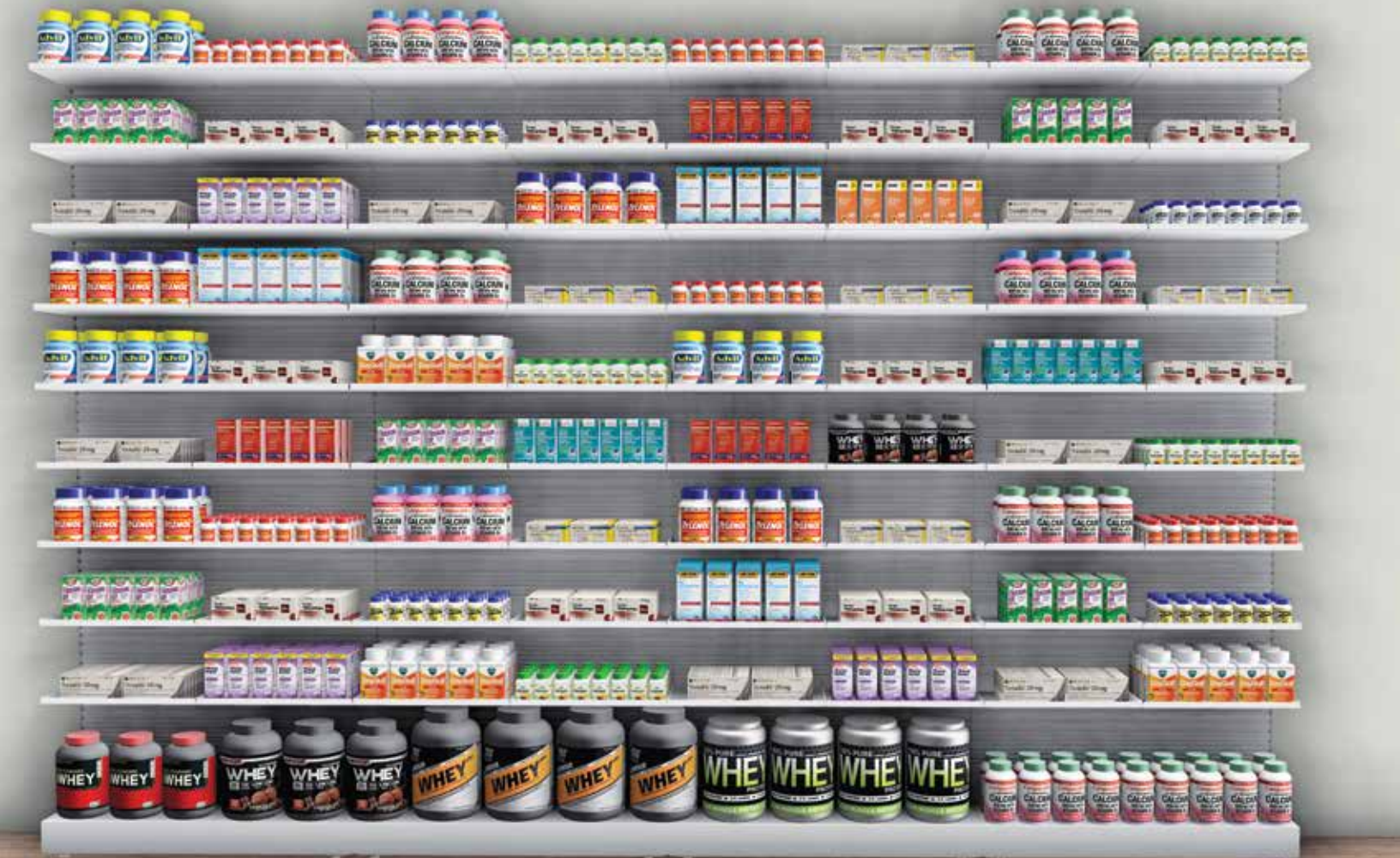
### AVAILABLE PANELS (IN)

32 48



# OPTIWALL

With its 16-inch shelves, the Optiwall allows you to increase your storage space by 30%.





# LABORATORY SHELVES

Our Rx bay shelves are designed for maximum medication storage while giving you a lot of room to work.

Store your prescription medication securely in our Narco cabinets.



NARCOTICS  
CABINET







OUR  
SHELVES



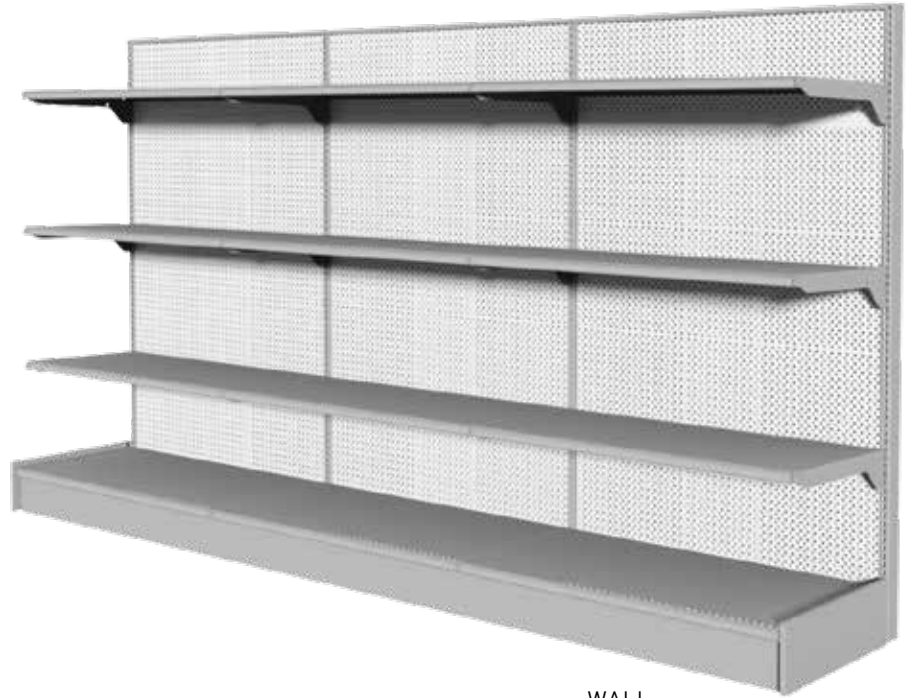
## RETAIL SHELVES

Our retail shelves are fully modular so you can easily reconfigure your aisles and displays. Their versatility and sturdiness make them perfect for pharmacies.





END DISPLAY



WALL



ISLAND

## TECHNICAL SPECIFICATIONS

---

Post height: 36 to 140 in. (in increments of 6 in.)

---

Base shelf: 8 to 36 in. deep (in increments of 2 in.)

---

Shelf width: 24 to 48 in. (in increments of 6 in.)

---

Available back types: masonite (plain, pegboard), steel (plain, pegboard), slatwall (with or without aluminum inserts)

# OUR COSMETIC SHELVING







Catch your clients' eye with elegant and inviting cosmetic displays and refined LED lighting for a high-end look that showcases your products.





# Produits Naturels et Vitamines



## OUR SPECIAL PRODUCTS

From special counters to magazine racks and waiting areas, we have an array of products designed specifically for pharmacies.







## OUR PHARMACY CLIENTS

ETALEX HAS BEEN PROVIDING **ADVICE** AND **SOLUTIONS**  
TO PHARMACIES ACROSS QUEBEC AND CANADA FOR OVER **50 YEARS**.





[www.etalex.ca](http://www.etalex.ca)



514 351-2000 1 800 351-3125

8501 Jarry Street East  
Anjou, QC H1J 1H7

1299 Marie-Victorin  
St-Bruno, QC J3V 6B7

10251 Ray Lawson Blvd.  
Anjou, QC H1J 1L6