



LIGHTED SHELVES

INFORMATION,
INSTALLATION GUIDE
AND PRODUCT CODES





LIGHTED SHELVES

Historically reserved for high-end, electronic and cosmetics products, nowadays lighted shelves are used more and more in all departments of retail stores.

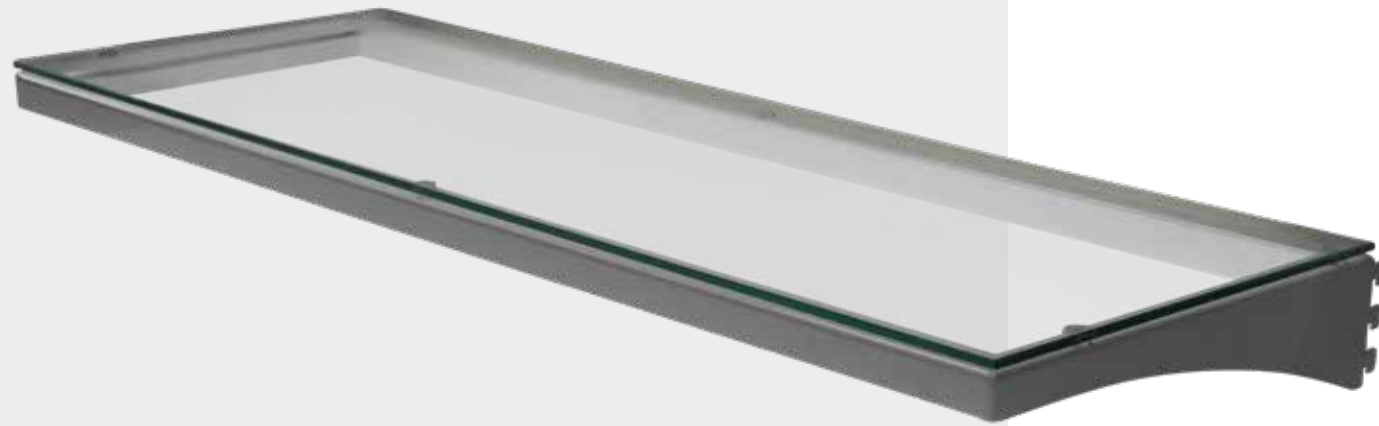
Built with the same level of precision and quality as our standard shelves, our lighted shelves add an element of style and finesse to the layout of your store.

Easy to install, durable and secure, our lighted shelves enhance the look of any department of your store, adding a touch of prestige and brightness to your featured products.

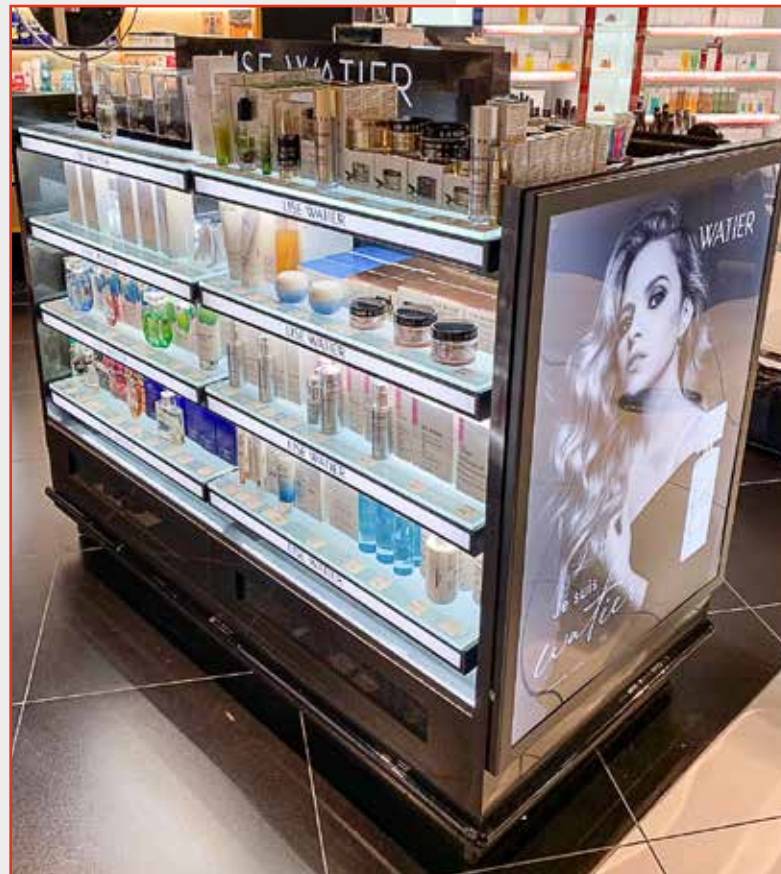
ETALEX

SHELF WITH TEMPERED GLASS

Shelf width : 24" - 48"



Shelf depth
6" - 24"

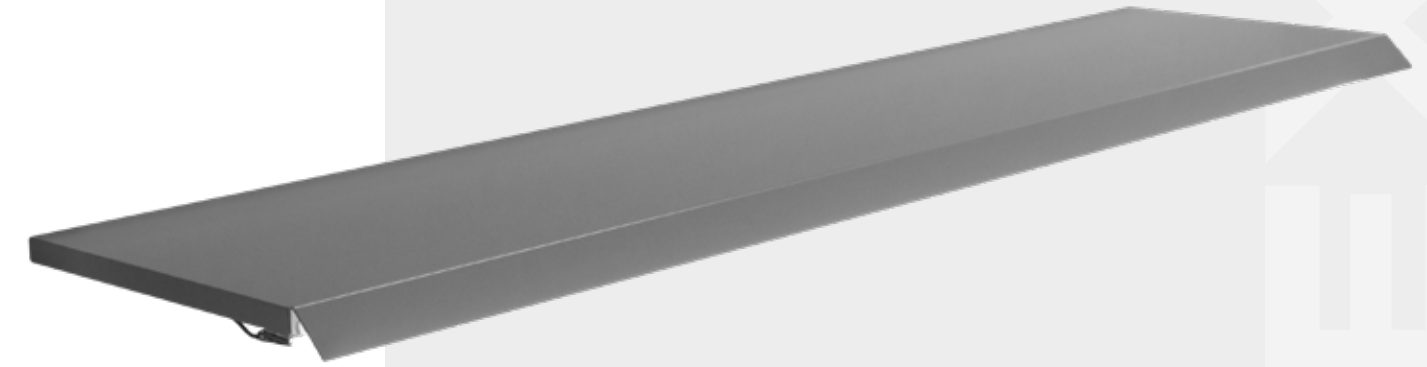


SHELF WITH TEMPERED GLASS

- Brighter
- Compatible with all our shelving lines
- Ultra resistant tempered glass
- Standard steel frame providing very good load capacity
- No connection required (works by contact with rear connector strips and transformer)

SHELF WITH LED TUBE

Shelf width : 24" - 48"



Shelf depth
6" - 30"

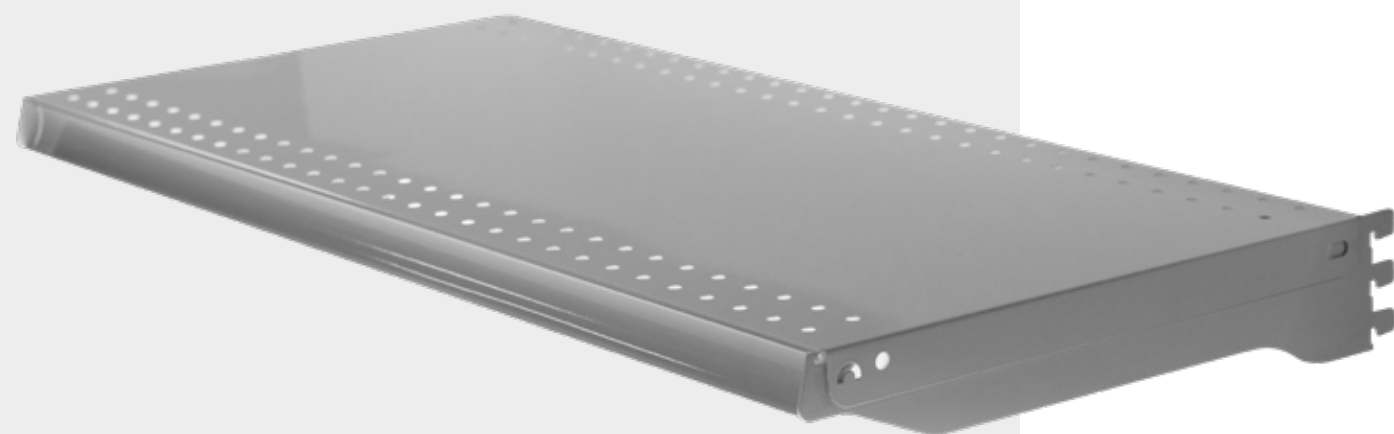


SHELF WITH LED TUBE

- No transformer required
- Compatible with existing electrical system - 120V socket
- Inter-connection between each LED addition via 20" connectors. Can be added to any metal surfaces with anodized magnets (canopy, header, backsplash, etc.)

SHELF WITH LED STRIP

Shelf width : 24" - 48"



Shelf depth
6" - 30"

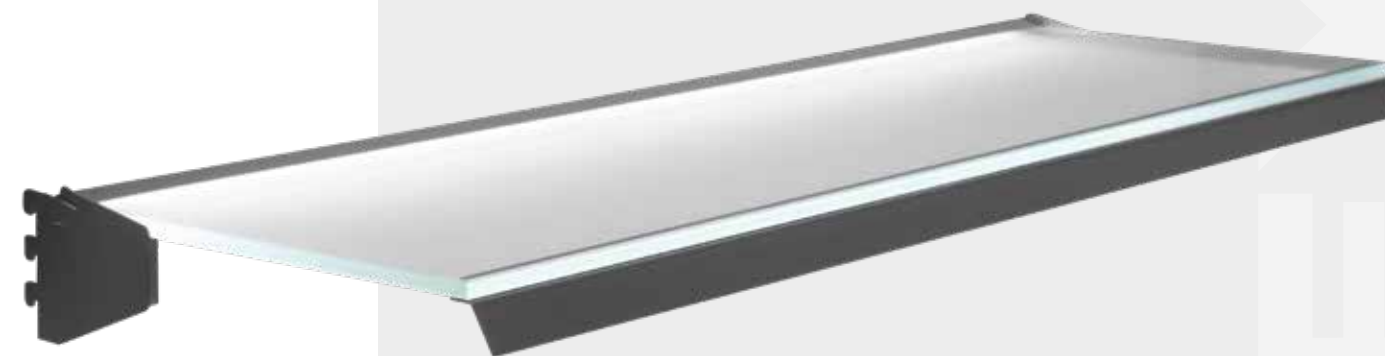


SHELF WITH LED STRIP

- Light included with the shelf
- Compatible with all our shelving lines
- No connections required (works by contact with rear connector strips and transformer)

"STARFIRE" SHELF

Shelf width : 24" - 48"



Shelf depth
6" - 16"



"STARFIRE" SHELF

- Compatible with our E-Series and Hybrid series -
- No connections required -
- (works on contact with rear connector strips and transformer)
- Underlying double lighting + intra-glass for an optimal result
- Levitation effect of the shelf (without framing) -
- Brightest model available -

PORTFOLIO



PORTFOLIO



TIPS AND PRACTICAL INFORMATION

EACH ETALEX METAL AND GLASS SHELF WITH METAL BACKET CONSUMES **1.5 AMPS**, WITH ONE LED LIGHTED STRIP.

REAR CONNECTOR STRIPS ARE SUPPLIED IN PAIRS, WITH WIRING BLACK (-) RIGHT AND RED (+) LEFT. THE TERM 'ZONE' MEANS **A STAINLESS STEEL REAR CONNECTOR SECTION.**

LOAD CAPACITY PER ZONE ON THE REAR CONNECTOR STRIPS PAIR IS: **4.5 AMPS OR 3 SHELVES PER ZONE.**

A 25A TRANSFORMER IS SUPPLIED WITH 4 CONNECTIONS OF 5 AMPS EACH. THE TRANSFORMER CAN POWER UP TO TWO SECTIONS OF SHELVES EQUIPED WITH 2 ZONES REAR CONNECTOR STRIPS.

THE 25A TRANSFORMER CAN POWER UP TO A MAXIMUM OF **12 LIGHTED SHELVES PER SECTION OF 4 ZONES.**



QUOTING A PROJECT

QUESTIONS TO ASK WHILE PREPARING A DESIGN

1. DETAILS REGARDING THE SHELVING SECTION

- GONDOLA OR WALL UNITS; TYPE S, E, HYBRID, OR L SERIES?
- LENGTH AND EXACT NUMBER OF SECTIONS REQUIRING LED SHELVES?
- HEIGHT OF THE UPRIGHTS?
- DEPTH AND WIDTH OF THE BASE DECKS?
- DEPTH AND WIDTH OF LED UPPER SHELVES?
- NUMBER OF LED UPPER SHELVES PER SECTION?
- TYPE OF LED LIGHTED SHELVES; ETALEX STD METAL SHELVES, GLASS SHELVES WITH PERIMETER FRAME, OR STARFIRE GLASS SHELVES?

2. DO A ROUGH LAY-OUT OF THE SHELVING SECTION

(SEE DRAWING ON PAGE 14)

- SHOW NUMBER OF LED SHELVES FOR EACH SECTION
- DETERMINE THE NUMBER OF 25 AMP TRANSFORMERS REQUIRED
- LOCATE EACH TRANSFORMER ON THE LAY-OUT
- SPECIFY WHERE THE 110 VOLTS OUTLET BOXES SHOULD BE LOCATED

3. COMPLETE THE QUOTE

PRODUCT CODES

- WITH LED ASSEMBLY INCLUDED IN THE SHELF
- IF POSSIBLE, ALWAYS PLACE THESE SHELVES WITH WELDED BRACKETS
 - ALWAYS PUT CONNECTORS (CALCULATION TO FOLLOW)
 - ALWAYS PUT TRANSFORMERS (CALCULATION TO FOLLOW)
 - ALWAYS INCLUDE A PURCHASE COLOR CODE

CONNECTORS	
CODE	DIMENSION
98LEDTRACK46	46"
98LEDTRACK46D	46" DOUBLE
98LEDTRACK56	56"
98LEDTRACK56D	56" DOUBLE
98LEDTRACK80	80"
98LEDTRACK84	84"
98LEDTRACK92	92"



DESCRIPTION	CODE
TRANSFO 5 A	98LEDTRANSFO5A
TRANSFO 25A	00306PS0000

S SERIES SHELVES WITH WELDED BRACKETS AND LED ASSEMBLY.

CODE PRO	DESCRIPTION
P203LED1036SUP	LED SHELF 10" x 36" + WELDED BRACKET SS
P203LED1048SUP	LED SHELF 10" x 48" + WELDED BRACKET SS
P203LED1224SUP	LED SHELF 12" x 24" + WELDED BRACKET SS
P203LED1230SUP	LED SHELF 12" x 30" + WELDED BRACKET SS
P203LED1248SUP	LED SHELF 12" x 48" + WELDED BRACKET SS
P203LED1436SUP	LED SHELF 14" x 36" + WELDED BRACKET SS
P203LED1448SUP	LED SHELF 14" x 48" + WELDED BRACKET SS
P203LED1636SUP	LED SHELF 16" x 36" + WELDED BRACKET SS
P203LED1648SUP	LED SHELF 16" x 48" + WELDED BRACKET SS
P203LED1836SUP	LED SHELF 18" x 36" + WELDED BRACKET SS
P203LED1848SUP	LED SHELF 18" x 48" + WELDED BRACKET SS
P203LED2036SUP	LED SHELF 20" x 36" + WELDED BRACKET SS
P203LED2048SUP	LED SHELF 20" x 48" + WELDED BRACKET SS
P203LED2236SUP	LED SHELF 22" x 36" + WELDED BRACKET SS
P203LED2248SUP	LED SHELF 22" x 48" + WELDED BRACKET SS
P203LED2436SUP	LED SHELF 24" x 36" + WELDED BRACKET SS
P203LED2448SUP	LED SHELF 24" x 48" + WELDED BRACKET SS

WITH LED TUBE

- NO TRANSFORMER REQUIRED
- MAXIMUM OF 10 TUBES IN A ROW
- ALWAYS NEED A MALE CONNECTOR ON THE STARTER SECTION AND FEMALE CONNECTORS FOR THE ADDITIONAL SECTIONS BETWEEN THE LED TUBES
- BRACKETS WITH NOTCHES FOR WIRES ALSO AVAILABLE

NEON STYLE LED TUBING LIGHT FOR E-SERIES SHELVES	CODE
STANDARD SHELF (24-36-48"/")	00301xxxx
LIGHT FIXTURE LED - 22" (for shelf 24")	P06046122NM
LIGHT FIXTURE LED - 33" (for shelf 36")	P06046133NM
LIGHT FIXTURE LED - 45" (for shelf 48")	P06046145NM
FEMALE CONNECTOR LED - WITH ATTACH 20"	006046F20NM
MALE CONNECTOR LED - 78"	006046M78NM
BRACKET + OBLONG HOLES FOR WIRE (2 PER SHELF)	0100210xx



BRACKET + OBLONG HOLES FOR WIRE



FEMALE CONNECTOR LED



MALE CONNECTOR LED



TRANSFO 25A



MAGNETIC APPLICATION CLIP



WOOD APPLICATION CLIP



REAR CONNECTOR STRIPS



LED TUBING LIGHT

"STARFIRE" SHELF

- **CAUTION****
- ONLY COMPATIBLE WITH OUR E AND HYBRID SERIES**
- ALWAYS INCLUDE PURCHASE COLOR CODE
 - TRANSFORMER AND REAR CONNECTOR STRIPS ARE MANDATORY

DESCRIPTION	CODE
TRANSFO 5 A	98LEDTRANSFO5A
TRANSFO 25A	00306PS0000

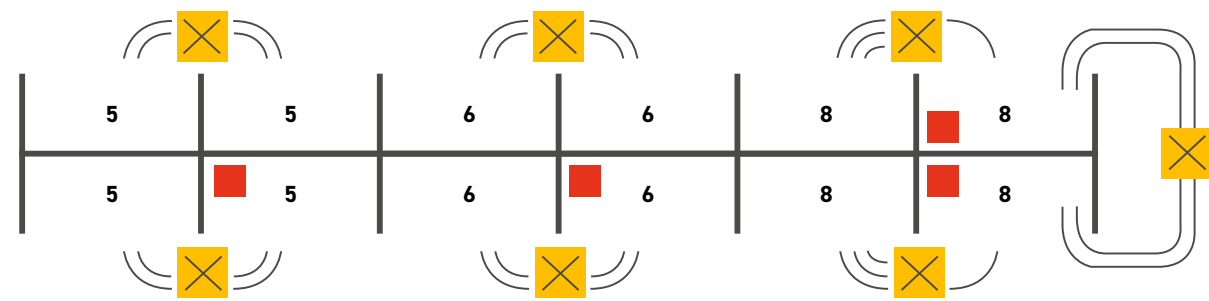
SHELF "STARFIRE"	
CODE	DIMENSION
98TABSTAR1236	12" x 36"
98TABSTAR1248	12" x 48"
98TABSTAR11636	16" x 36"



ELECTRICAL PLAN

HERE IS A DRAWING THAT WILL HELP YOU DETERMINE THE NUMBER OF TRANSFORMERS AND AMPERAGE REQUIRED FOR YOUR INSTALLATION.

GONDOLA



DOUBLE LAYERS
TRIPLE LAYERS

MULTI ZONE REAR CONNECTORS

- 3 SHELVES PER SECTION WITH SINGLE LAYER REAR CONNECTOR STRIPS (1 ZONE).
- 6 SHELVES PER SECTION WITH DOUBLE LAYER REAR CONNECTOR STRIPS (2 ZONES).
- 9 SHELVES PER SECTION WITH TRIPLE LAYER REAR CONNECTOR STRIPS (3 ZONES).
- 12 SHELVES PER SECTION WITH QUADRUPLY LAYER REAR CONNECTOR STRIPS (4 ZONES).
- NOTE: MAXIMUM OF 3 SHELVES PER LAYER OF REAR CONNECTOR STRIP OR PER ZONE.**

*CALCULATION OF ZONES FOR THE STARFIRE SHELF IS DIFFERENT. PLEASE CONTACT ONE OF OUR REPRESENTATIVES FOR MORE INFORMATION.

25A TRANSFORMER

110 VOLTS OUTLET

DOUBLE LAYERS

TRIPLE LAYERS

NOTES



WWW.ETALEX.CA

CONTACT US

ANJOU PLANT

8501, Jarry Street East,
Montreal, QC H1J 1H7

T 514 351-2000

SF 1 800 351-3125

SAINT-BRUNO PLANT

1299, Marie-Victorin,
St-Bruno, QC J3V 6B7

T 514 351-2000

SF 1 800 351-3125

RAY-LAWSON PLANT

10251, Ray-Lawson,
Anjou, QC H1J 1L6

T 514 351-2000

SF 1 800 351-3125



FACEBOOK/ETALEX



LINKEDIN/ETALEX



YOUTUBE/ETALEX

PROUDLY MADE IN CANADA 🍁